

Neutrino A0808



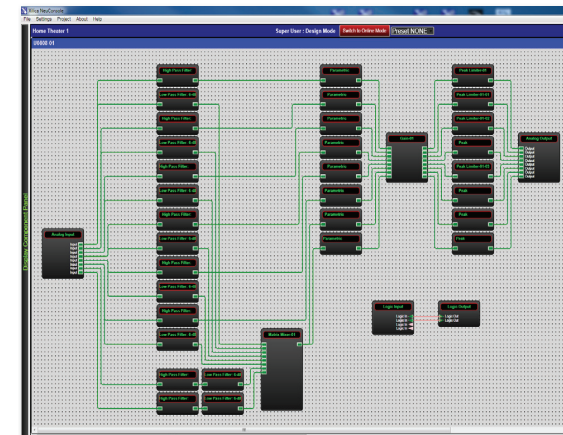
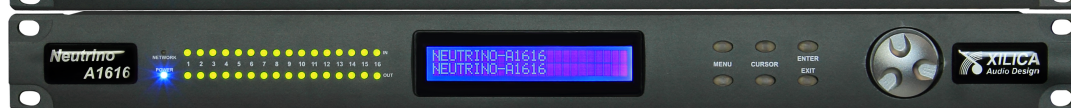
Neutrino A0816



Neutrino A1608



Neutrino A1616



NeuConsole software DSP design example

Introduction:

At Xilica Audio Design we have a passion for digital audio. That's what we do. While DSP flexibility is important to us, the focus of our passion is superb audio performance first and foremost. If you care about audio performance and DSP flexibility - in that order - you share our passion. Our Neutrino Series of digital audio processors is one of those products. Designed in Canada and built on the audio performance reputation of our 40 Bit Floating Point DSP Engine, Neutrino brings a new level of audio performance, ease of use, and value to the world of open architecture - drag & drop audio processing for fixed audio installations.

Description:

Neutrino A-Series processors are available in four I/O configurations - 8x8, 8x16, 16x8 and 16x16 with Mic/Line input selection per input, 48V phantom power, and quality mic pre-amps. A-Series N, D, and ND model versions provide Network I/O (16x16 Dante), Digital I/O (8x8 AES/EBU), and Network/Digital I/O combo model versions for added I/O and application flexibility.

From a large palette of audio DSP modules, create your personal DSP system design to accommodate each unique project requirement. The NeuConsole software GUI is easy to use and auto features reduce DSP design time and network connection management (in DHCP mode).

Control Neutrino via Ethernet using the included NeuConsole software GUI (or download at www.xilica.com), from any PC using our NeuPanel PC control designer, with the logic input/relay output ports, using optional NeuPanel Series - Mini and Touch wall controls, or any third party controller.

Applications:

Any fixed audio installation where Open Architecture-Drag & Drop DSP is preferred, where audio performance, ease of use, simplified connectivity, I/O flexibility, and value are a priority and where Network I/O capability and Digital I/O are required.

Neutrino A-Series

- Open Architecture-Drag & Drop DSP
- 48kHz, 40 Bit Floating Point DSP Engine
- High Performance 24 Bit Converters
- Premium Grade Mic Pre-Amps
- 8x8, 8x16, 16x8, 16x16 I/O Models
- Mic/Line Input Selection per Input w 48V Phantom Power
- A-Series N, D, & ND Models Provide Network I/O, Digital I/O, and Network/Digital I/O Flexibility
- A1608AEC Model with Echo Cancelling
- Ethernet Connectivity and Control
- Easy to use NeuConsole Software GUI
- Auto Design and Connection Features
- Optional NeuPanel Series Wall Controls
- In Development - additional DSP modules, a browser based control app, break-out boxes, AVB card



Analog I/O

Models (I/O) - A0808 (8x8), A0816 (8x16), A1608 (16x8), A1616 (16x16)



Analog I/O and 8 x AES/EBU I/O

Models (I/O) - A0808-D (8x8), A1616-D (16x16)



Analog I/O and 16x16 Dante Network I/O

Models (I/O) - A0808-N (8x8), A0816-N (8x16), A1608-N (16x8), A1616-N (16x16)



Analog I/O, 16x16 Dante Network I/O & 8 x AES/EBU I/O

Models (I/O) - A0808-ND (8x8), A1616-ND (16x16)

Neutrino A0808, A0816, A1608, A1616, A1608AEC

Specifications

Inputs and Outputs

Input Impedance: >10k Ohms
 Output Impedance: 50 Ohms
 Maximum Level: +20dBu
 (Mic Gain: 0 / +40dBsteps)
 Type: Electronically balanced
 (48V Mic Phantom Power)

Audio Performance

Frequency Response: +/- 0.1dB (20 to 20kHz)
 Dynamic Range: 110dB typ (unweighted)
 CMMR: > 100dB (50 to 10kHz)
 Crosstalk: < -100dB
 Distortion: 0.002% (1kHz @ +4dBu)

Digital Audio Performance

Processor: 40-bit Floating Point
 Sampling Rate: 48kHz
 Analog Converters: High Performance 24-bit

Front Panel Controls

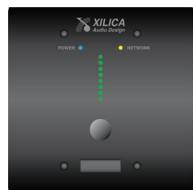
Display: 2 x 24 Character Backlit LCD
 Signal LEDs: 1 per channel
 Status LEDs: Power and Data
 Buttons: Menu Controls
 Dial Encoder: Embedded Thumb Wheel

Connectors

Analog I/O: Phoenix Plug-in 3.5mm (included)
 Digital I/O: DB25 (AES/EBU) (Tascam Format)
 Logic In-Relay Out: Phoenix Plug-in 3.5mm
 Ethernet & Network I/O: RJ45 (CAT5)
 Power: Standard IEC Socket

General

Power: 90-240 VAC (50-60Hz)
 Dimensions: 19"x1.75"x9" (483x44x229 mm)
 Rack Mount: 1RU Vent Between Units
 Weight: 11 lbs / 5 kg
 Warranty: 2 years Parts and Labour



Mini-K1



Mini-K4



Mini-S4K1



Mini-S4



Mini-S8

Optional Mini-Series Wall Controls

Note: Specifications subject to change without notice
 Designed & Engineered in Canada

